

PLANS BOOK



A M Ā R A

Do more. Live more.

DEVELOPMENT PLAN

LEGENDS:

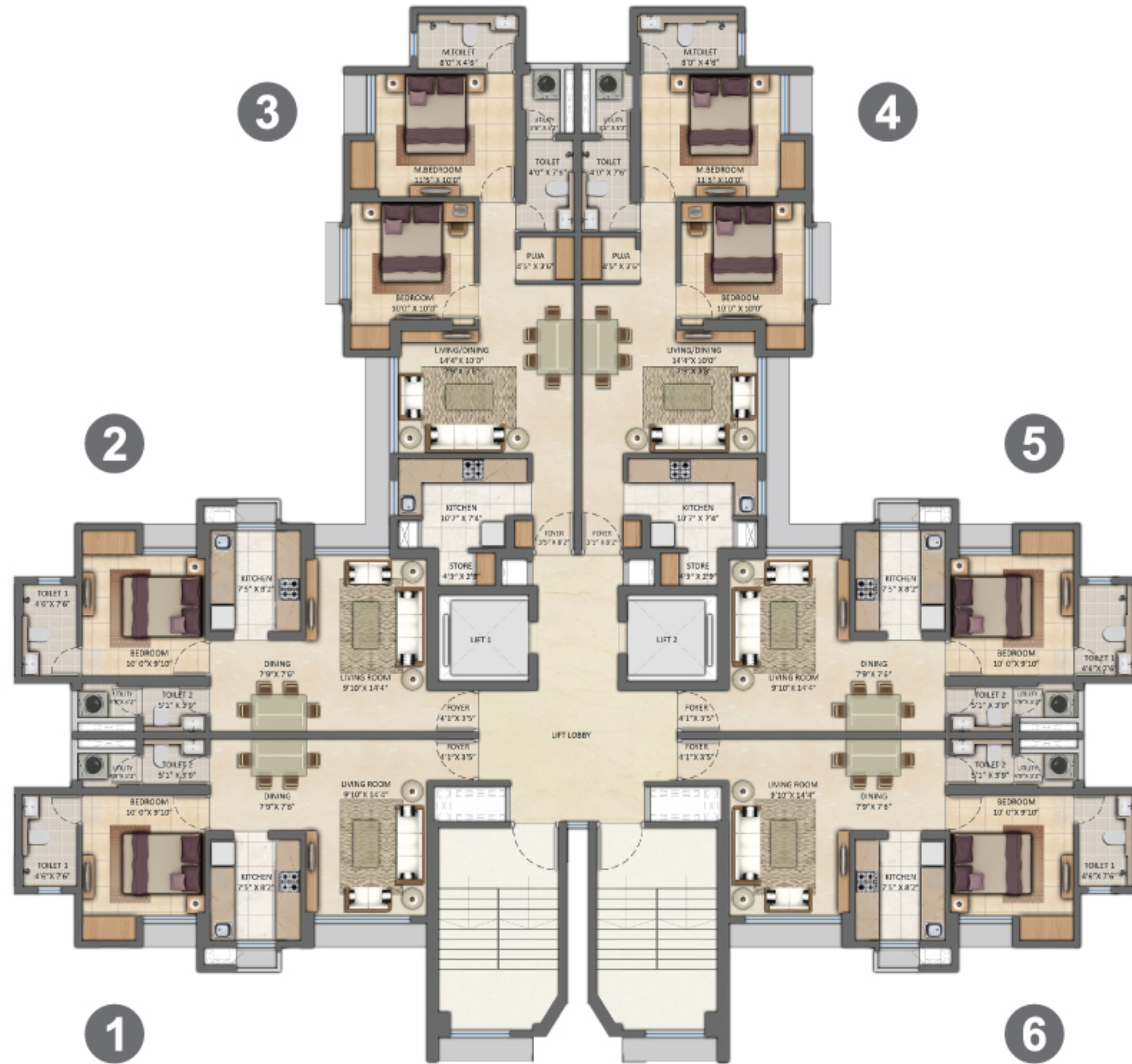
- 1. 6 LANE KOLSHET ROAD
- 2. GRAND ENTRANCE
- 3. MULTI-LEVEL CAR PARK
- 4. PAVILION
- 5. CENTRAL GREEN
- 6. PROJECT CLUBHOUSE & OUTDOOR CHILDRENS' PLAY AREA
- 7. CRICKET PITCH
- 8. PLAY VILLAGE
- 9. GRAND CLUB
- 10. SPORTS COURTS
- 11. FOOTBALL FIELD
- 12. FOREST ZONE
- 13. TEMPLES (JAIN & GANESHA)
- 14. FUTURE DEVELOPMENT







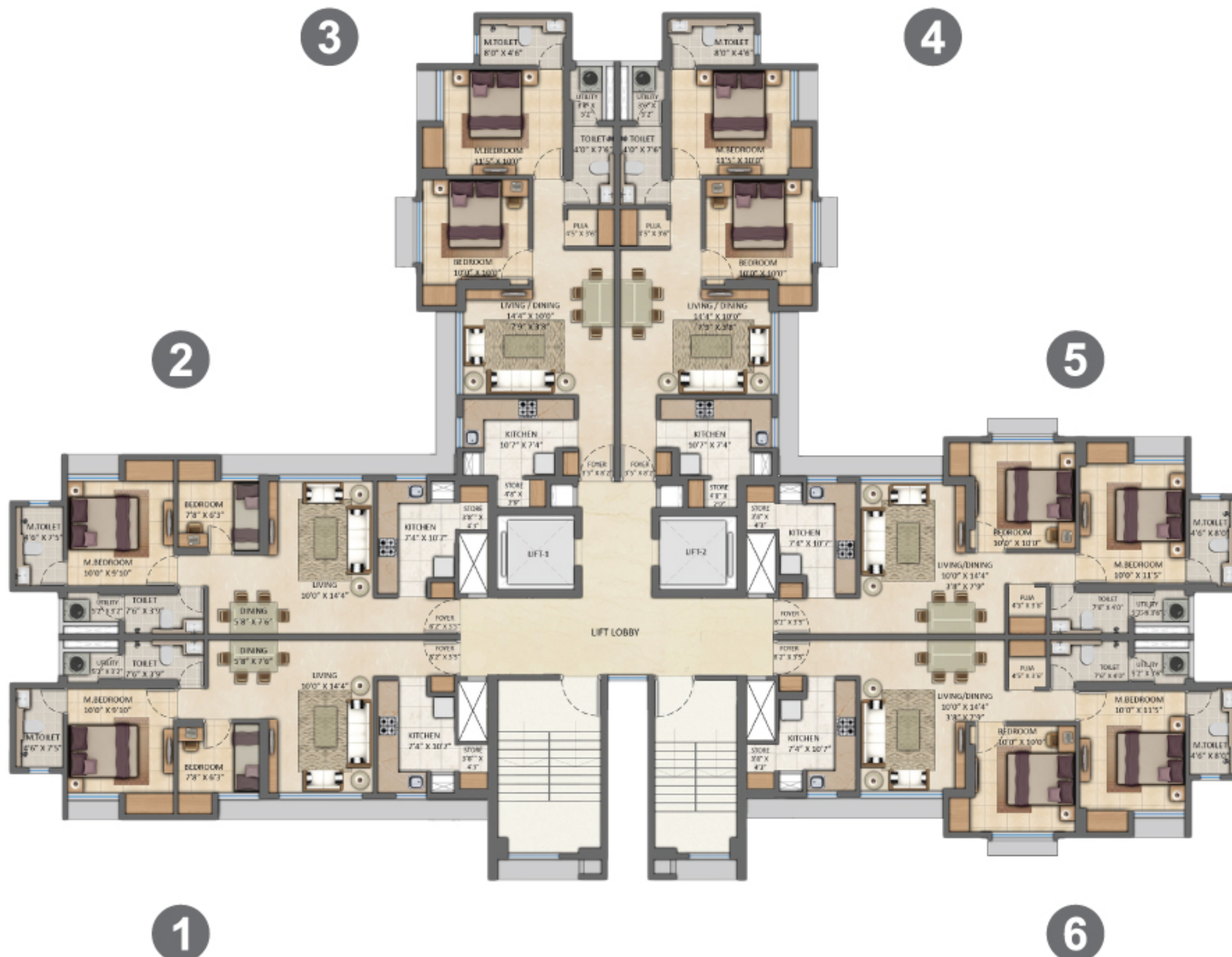
FLOOR PLANS



TYPICAL FLOOR PLAN - 1 BHK & 2 BHK ULTIMA



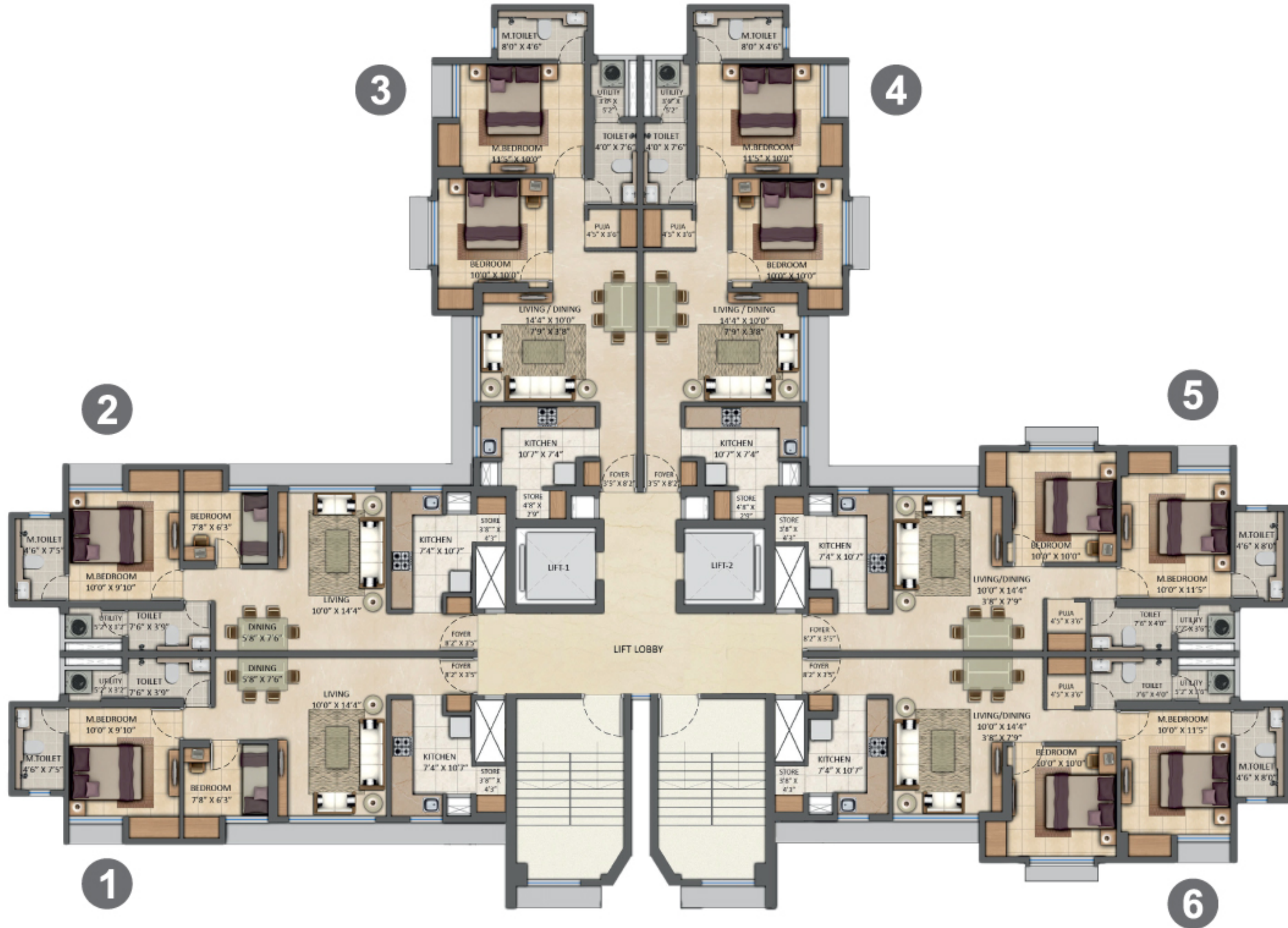
Please refer for wings: W31, W33, W35, W37  | W32, W34, W36, W45 



TYPICAL FLOOR PLAN - 2 BHK ULTIMA & 2 BHK OPTIMA



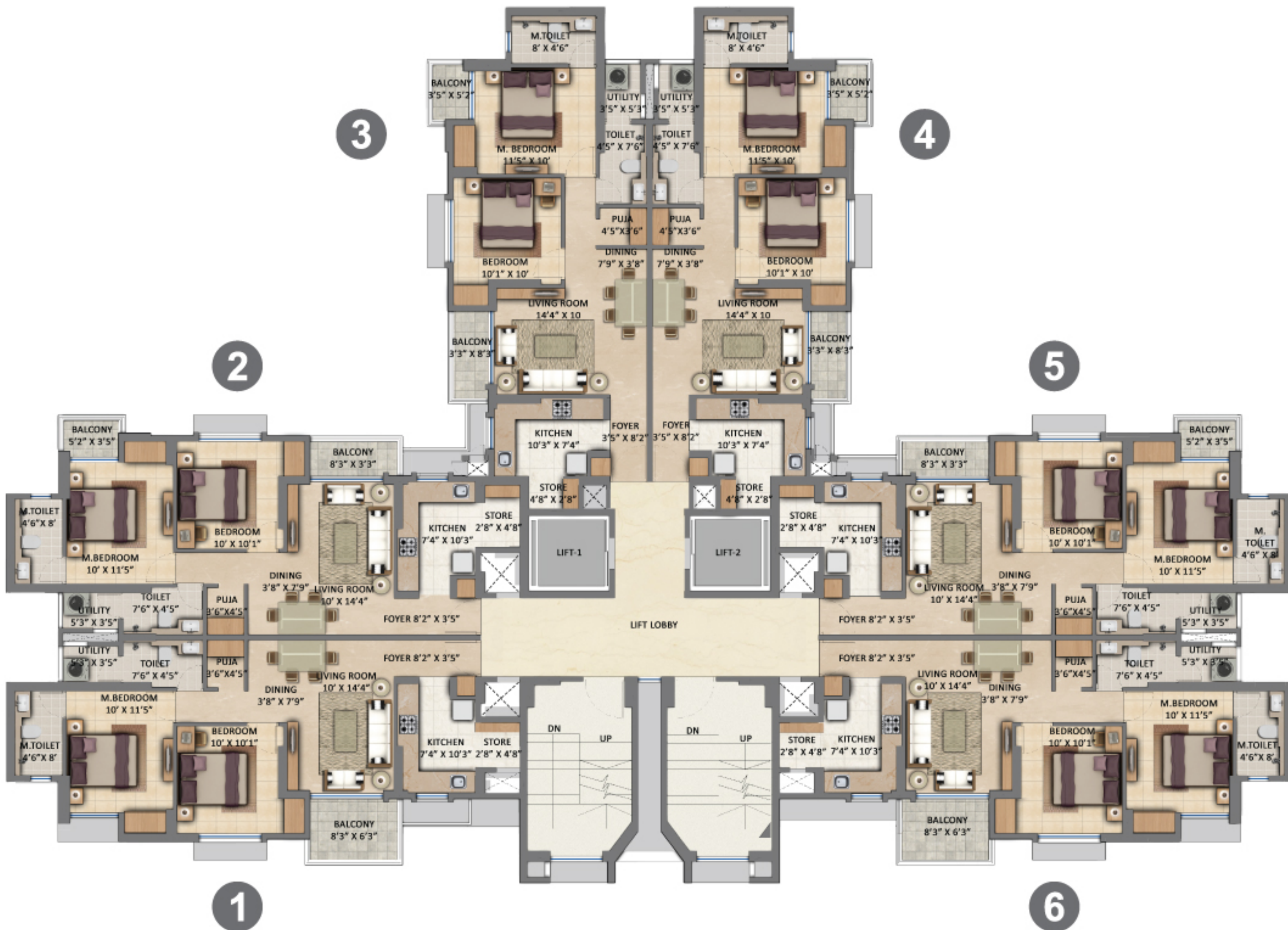
Please refer for wings: W17, W19, W27  | W18, W26 



TYPICAL FLOOR PLAN - 2 BED ULTIMA & 2 BED OPTIMA



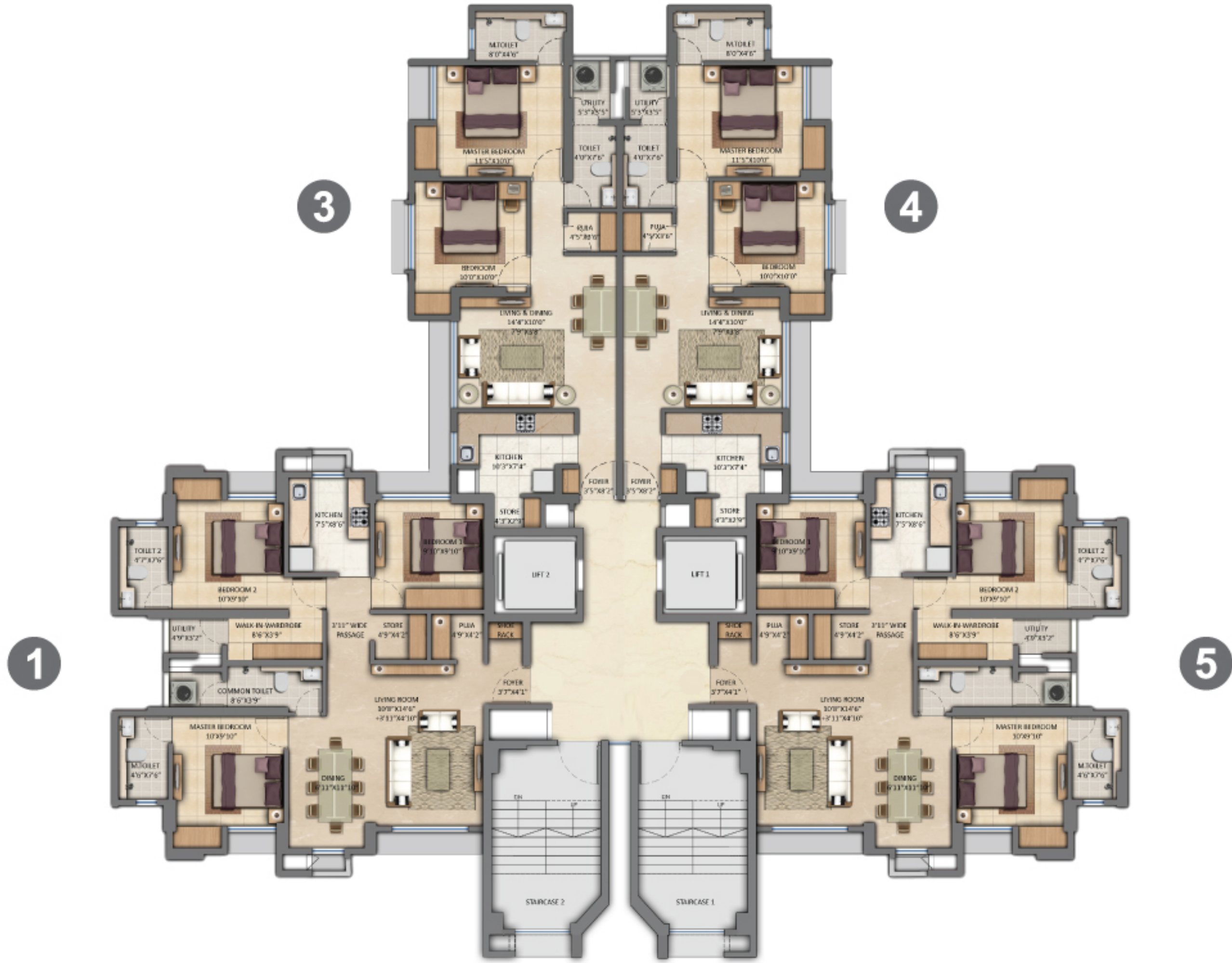
Please refer for wings: W21, W29  | W20, W28, W30 



TYPICAL FLOOR PLAN - 2 BHK ULTIMA WITH DECKS



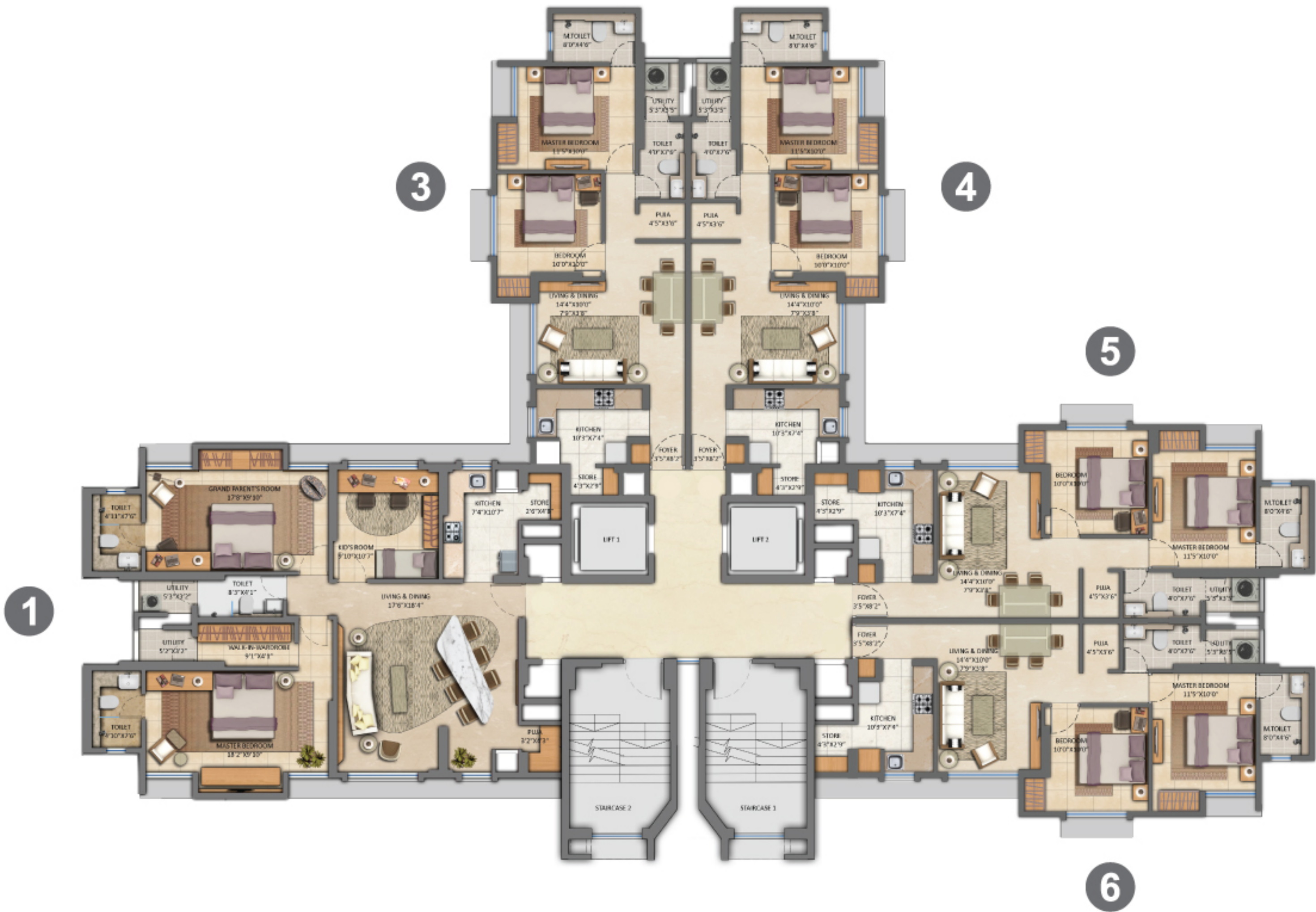
Please refer for wings: W6, W23  | W22 



JODI FLOOR PLAN - W31, W34, W35



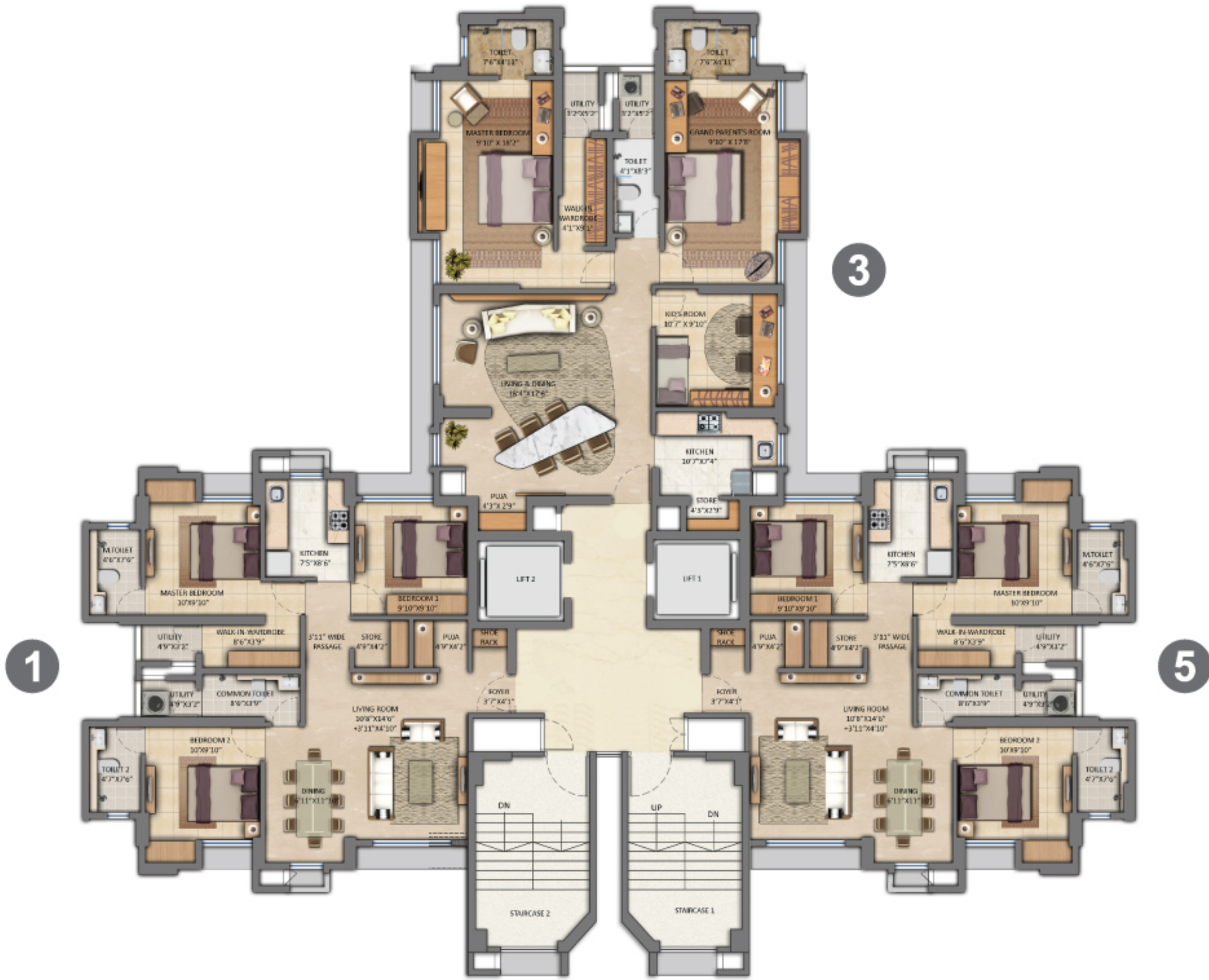
Please refer for wings: W31, W35  | W34 


JODI FLOOR PLAN - W28, W29, W30



Please refer for wings: W29  | W28, W30 

JODI FLOOR PLAN - W46



Please refer for wings: W46 



UNIT PLANS

UNIT PLAN - 1 BHK



Please refer for wings: W1, W2, W3, W4, W5, W7, W8, W9, W10, W11, W12, W13, W14, W15, W16, W31, W32, W33, W34, W35, W36, W37, W45

UNIT PLAN - 2 BHK OPTIMA



Please refer for wings: W17, W18, W19, W20, W21, W26, W27, W28, W29, W30

UNIT PLAN - 2 BHK ULTIMA



Please refer for wings: W1, W3, W5, W7, W9, W11, W12, W14, W16, W17, W18, W19, W20, W21, W26, W27, W28, W29, W30, W31, W32, W33, W34, W35, W36, W37, W45

UNIT PLAN - 2 BHK ULTIMA WITH DECK (TYPE A)



Please refer for wings: W6, W22, W23

UNIT PLAN - 2 BHK ULTIMA WITH DECKS (TYPE B)



Please refer for wings: W6, W22, W23

UNIT PLAN - 3 BHK (JODI)



Please refer for wings: W1, W2, W3, W4, W5, W7, W8, W9, W10, W11, W12, W13, W14, W15, W16, W31, W34, W35, W46

UNIT PLAN - 3 BHK LARGE (JODI)



Please refer for wings: W17, W18, W19, W26, W27, W28, W29, W30

UNIT PLAN - 3 BHK LARGE (JODI)



Please refer for wings: W46

Sales Office: Amara Sales Gallery, Clariant Compound, Kolshet Road, Thane (West) – 400 607
 Corporate Office: Lodha Excelus, N. M. Joshi Marg, Mahalaxmi, Mumbai – 400 011 | www.lodhagroup.com/amara

Disclaimer: The images and other details herein are indicative only. Any purchaser/leasee of this development shall be governed by the terms and conditions of the Agreement for Sale/Lease entered into between the parties, and no details mentioned in this printed material shall in any way govern such transactions. Variation of up to +/-2% in internal dimensions & areas is possible due to design and construction tolerances. The reader acknowledges that this is a launch application companion and some of the details may change over time in the best interest of the development, as may be decided by the Developer/Owner. | Internal document for training and reference only. Not for circulation. MahaRERA registration number: P51700018593, P51700018579, P51700020093, P51700016961 available on the website <https://maharera.mahaonline.gov.in>. Date of Printing - April 2019.